

278 000 €

Buying apartment

3 rooms

Area : 68 m²

Surface of the living : 20 m²

Hot water : Chauffe-eau Individuelle

Features :

Lift, Double Glazing, Watering, Exterior lighting, Electric gate, Videophone

2 bedrooms

1 terrace

1 bathroom

1 WC



Apartment 658VP849A Le Plan-de-la-Tour

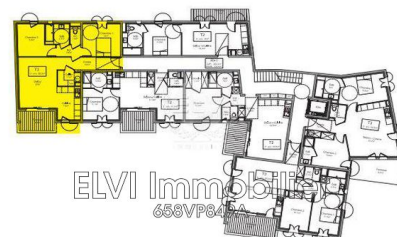
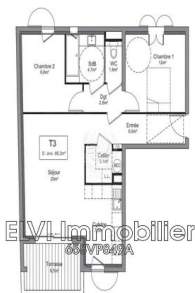
New residence near the village and its amenities, program of 18 apartments T1 T1 in T3, 130 000 € to 340 000 € on 2 floors, with elevator, parking in the basement. 3 room apartment of 68.3 m², facing North / West / South, located on the 1st floor, composed: 2 bedrooms, kitchen, living room, bathroom, separate toilet, pantry, and terrace of 6.5 m². Parking extra. We contacted for more information

Fees and charges :

278 000 €

Document non contractuel

19/06/2019



Raison sociale : FAMILIMO - Siège social : Agence ELVI 6 av. Georges Clemenceau "Le Victoria" 83120 Sainte-Maxime

RCS : FREJUS 791 398 738 00041 - N° 2013 B 00199 - Forme sociale : SAS

Numéro TVA Intracommunautaire : FR42538428095 - Carte professionnelle transaction n° CPI 8304 2016 000 008 136

Préfecture de délivrance de la carte professionnelle : CCI VAR

Capital : 1000€ - Caisse de garantie financière : C E G C - Montant garantie financière : 110 000€